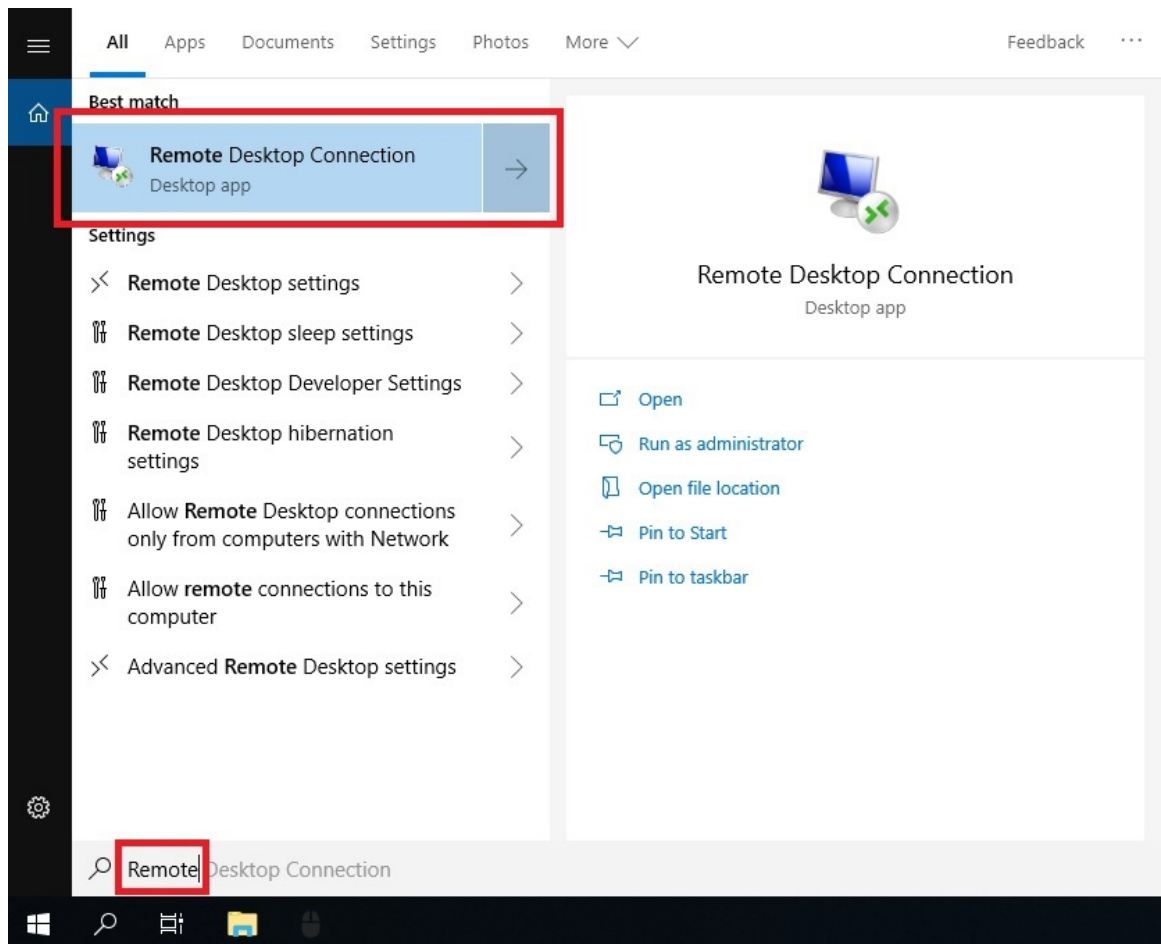


## Connect to your Weizmann office/lab computer using Remote Desktop Connection (RDP) from Windows:

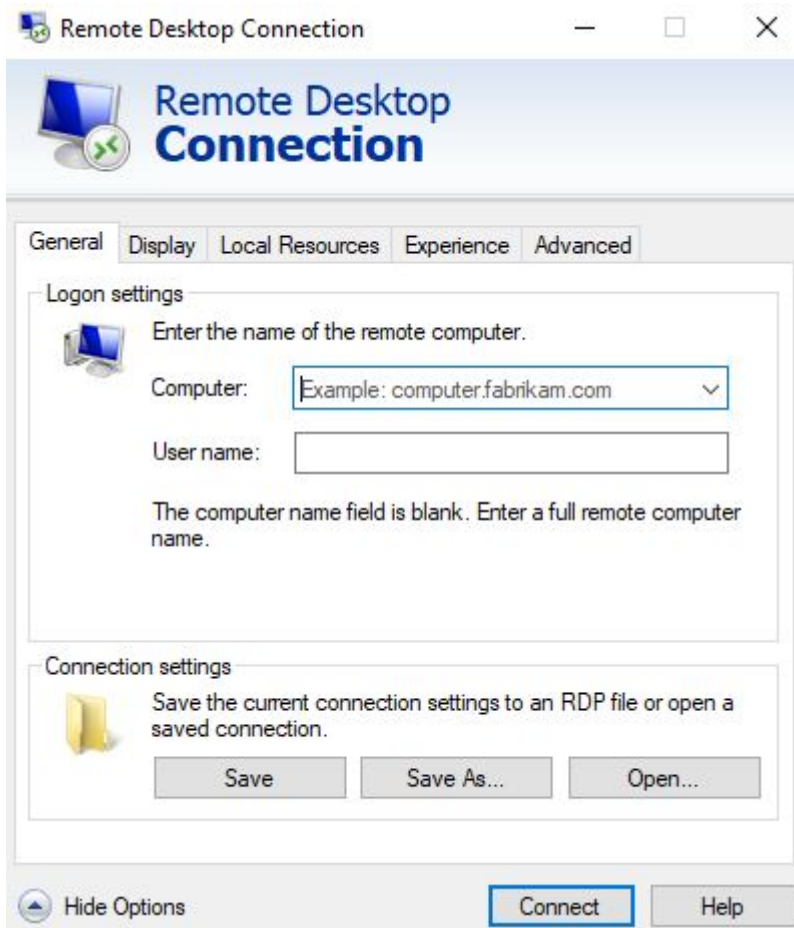
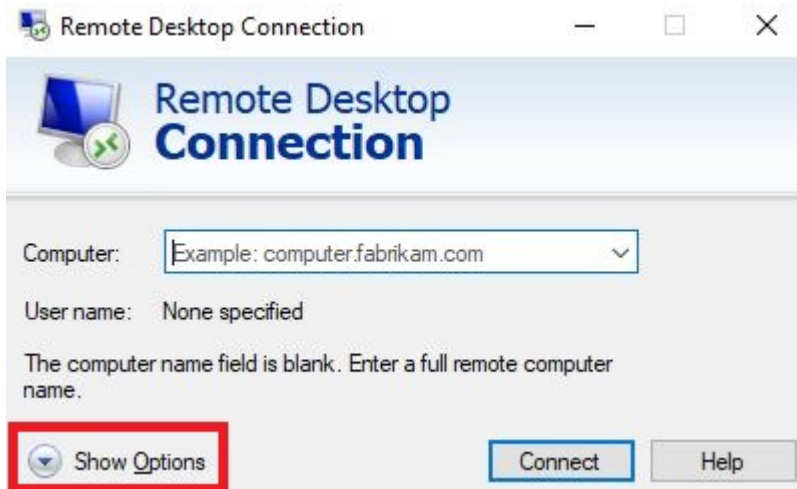
### How to

1. Click the **Start** button, and search for **Remote Desktop Connection**.
2. Click the **Remote Desktop Connection** application.



3. The Remote Desktop Connection window will open.

4. Click on **Show Options**.



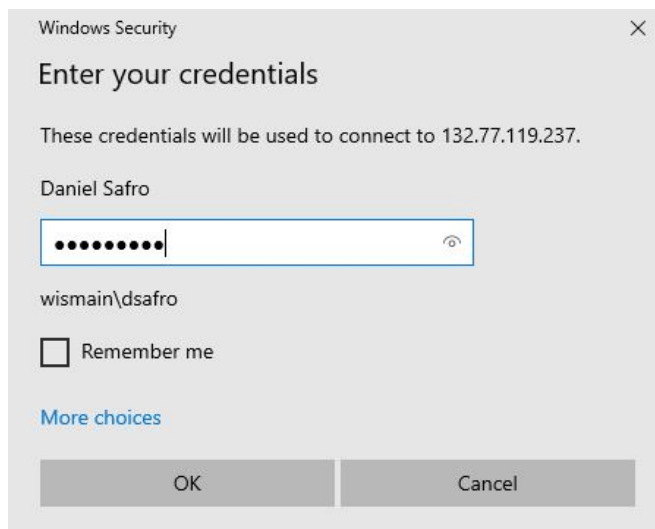
5. In **Computer** field, enter the **IP address** of your Weizmann computer.

6. In **User Name**, enter the user name on the Weizmann computer.

**Please note:**

If your Weizmann computer is joined to the domain (its full computer name is PC\*\*\*\*\*.wismain.weizmann.ac.il), the username must be written in the syntax of “wismain\YourUserID”.

7. Click **Connect**.
8. In the credentials window, enter the password, and then click **OK**.



9. In the computer identity verification window, click **Yes**.

