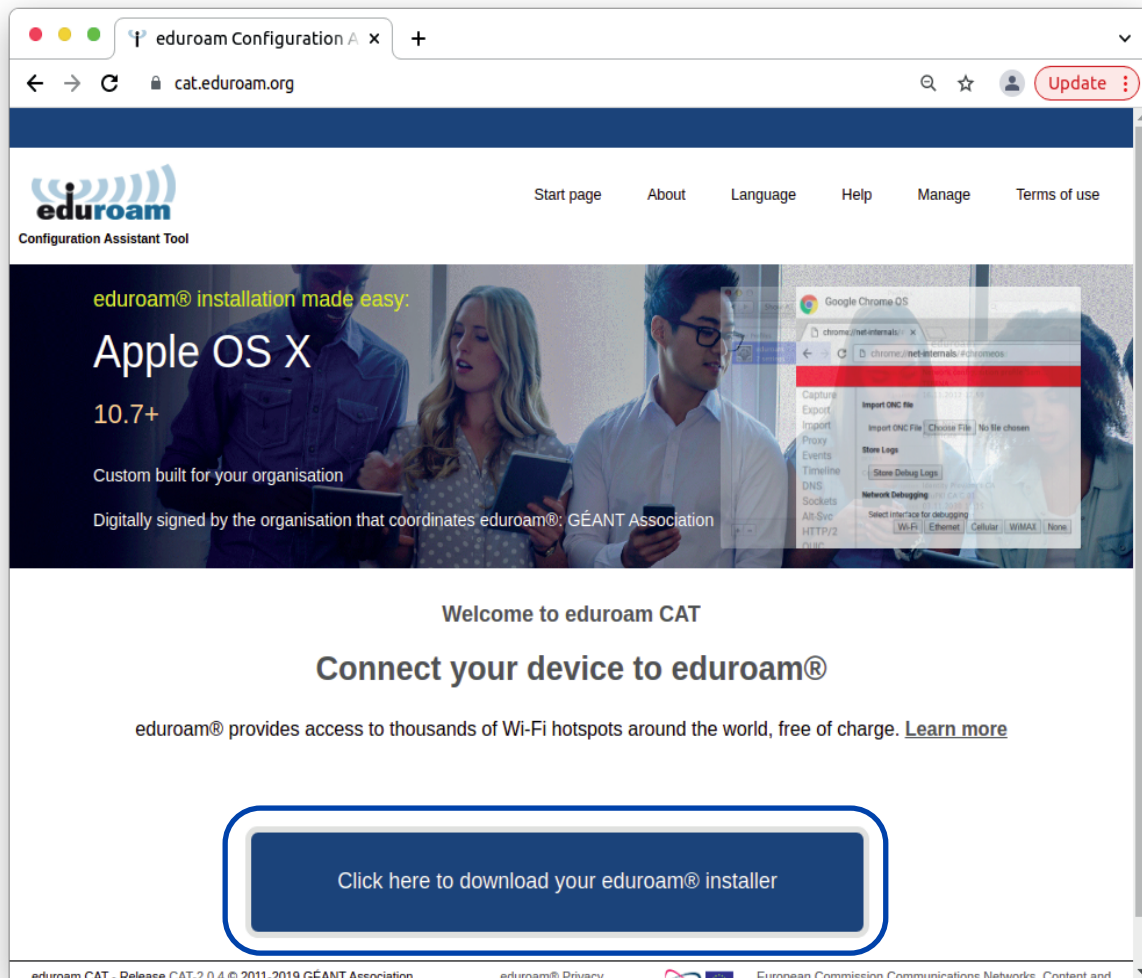


Installing and Connecting to eduroam on Linux

The following one-time installation will enable you to connect to eduroam automatically, whenever the service is in range.

Note: installation is to be carried out by Weizmann Institute employees only.

1. Access **cat.eduroam.org** via your browser.
2. Click **eduroam user: download your eduroam installer**.



eduroam Configuration Assistant Tool

Start page About Language Help Manage Terms of use

eduroam® installation made easy:
Apple OS X
10.7+
Custom built for your organisation
Digitally signed by the organisation that coordinates eduroam®: GÉANT Association

Welcome to eduroam CAT

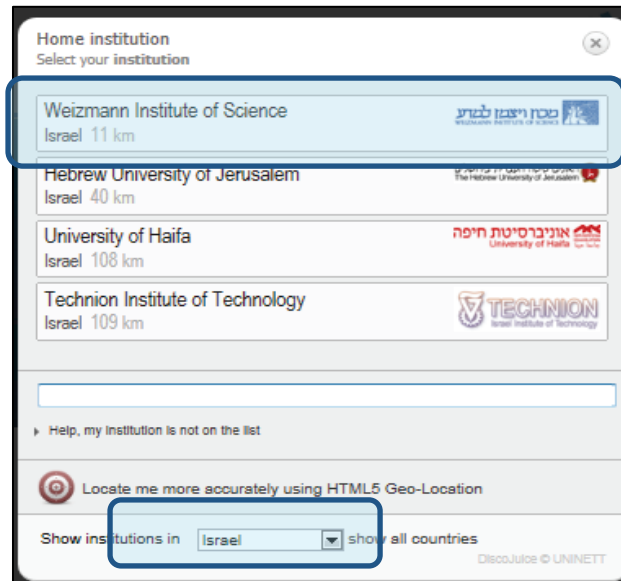
Connect your device to eduroam®

eduroam® provides access to thousands of Wi-Fi hotspots around the world, free of charge. [Learn more](#)

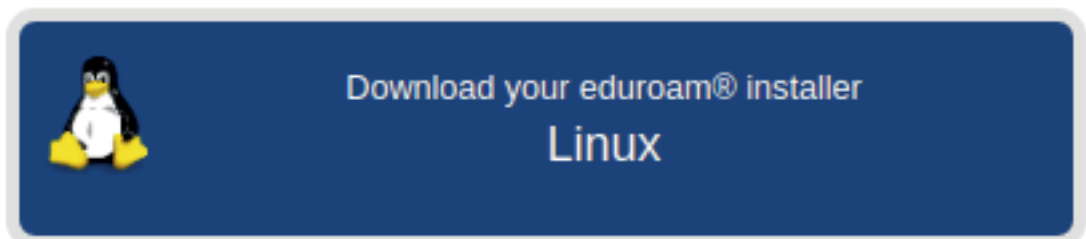
Click here to download your eduroam® installer

eduroam CAT - Release CAT-2.0.4 © 2011-2019 GÉANT Association | eduroam® Privacy | European Commission Communications Networks, Content and Media

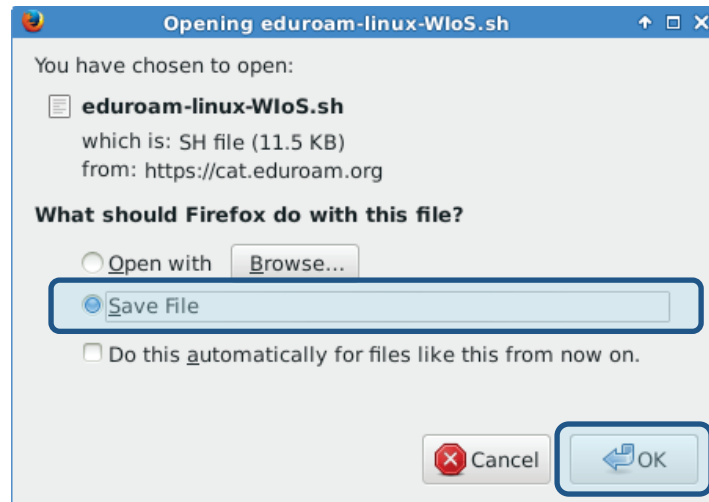
3. Click **Weizmann Institute of Science** on the window that pops up. If connecting from overseas, select to show institutions in **Israel**.



4. Click to select **Linux** as the OS currently installed on your computer.



5. A prompt to download the installation script will appear. Choose to save the file to your computer and click **OK**.

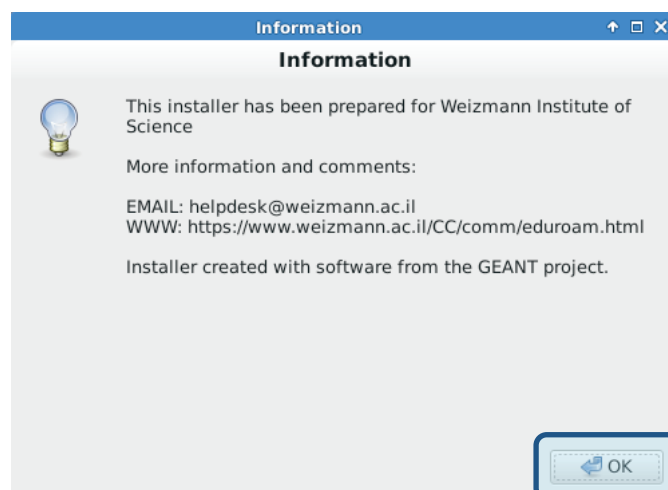


6. Once the script has been downloaded, launch a Terminal and type:

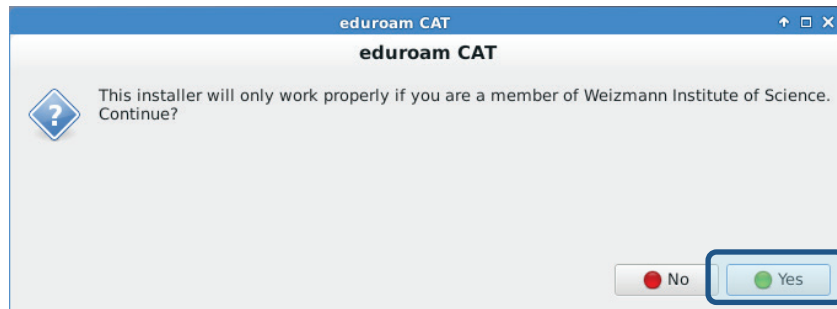

```
python3 ~/Downloads/eduroam-linux-WIoS.py
```

```
python3 ~/Downloads/eduroam-linux-WIoS.py
```

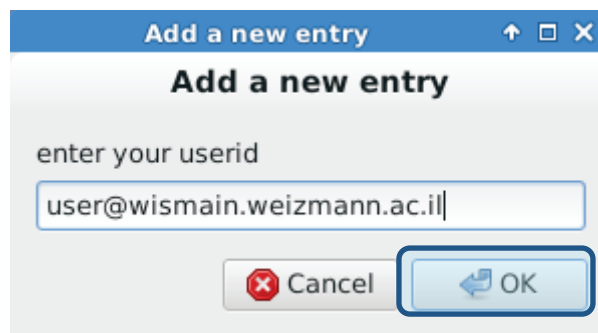
7. Click **OK** on the window that appears.



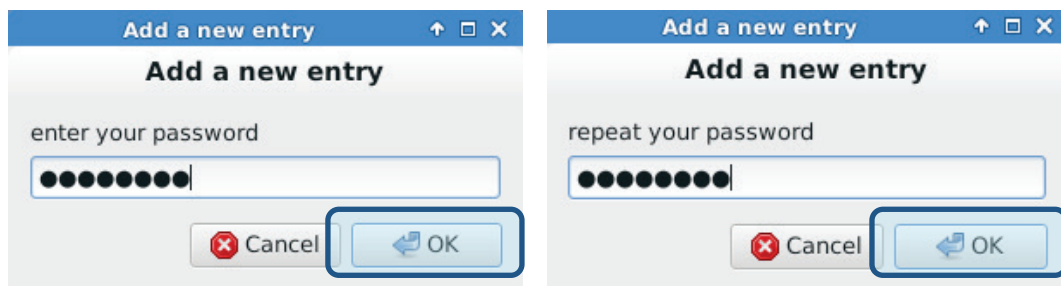
- Click **Yes** to approve the notification that pops up.



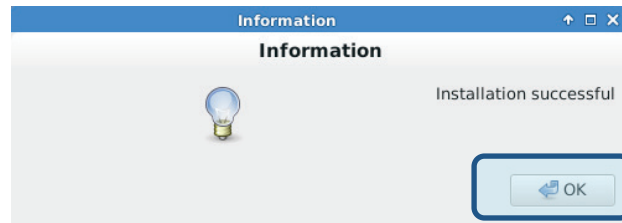
- Enter your user name (**xxxx@wismain.weizmann.ac.il**) on the window that appears, then click **OK**.



- Enter and confirm your password, and click **OK** on the two subsequent windows that appear.



11. Click **OK** to complete the installation.



12. You may now select and connect to **eduroam** from the list of available networks.

