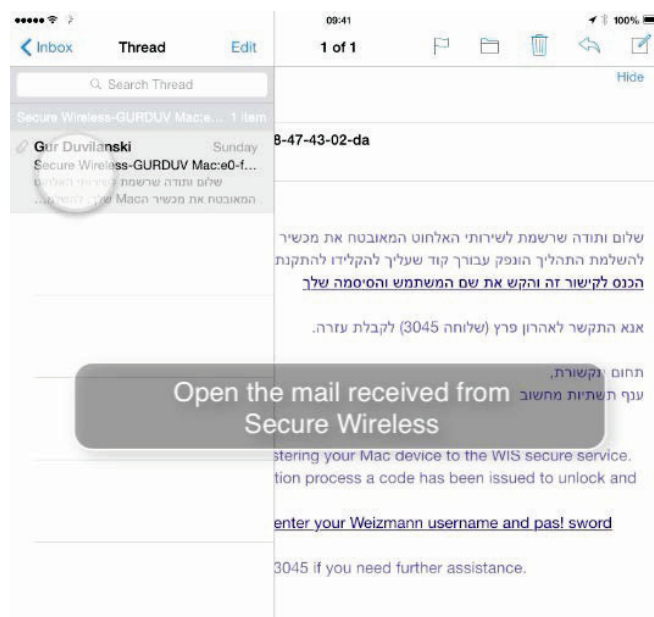




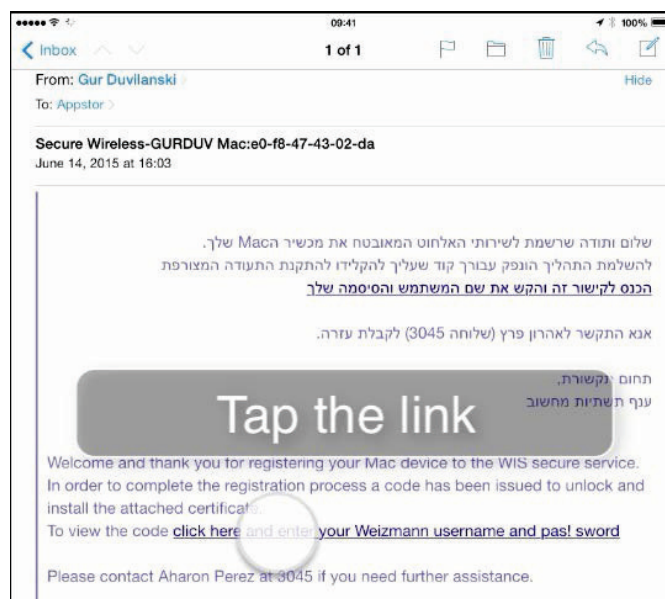
## WIS\_Secure 2.0 Install on iOS (iPhone and iPad)

To install the WIS secure service on your iPhone or iPad, perform the following steps:

1. Open the registration confirmation e-mail message received from Secure Wireless.

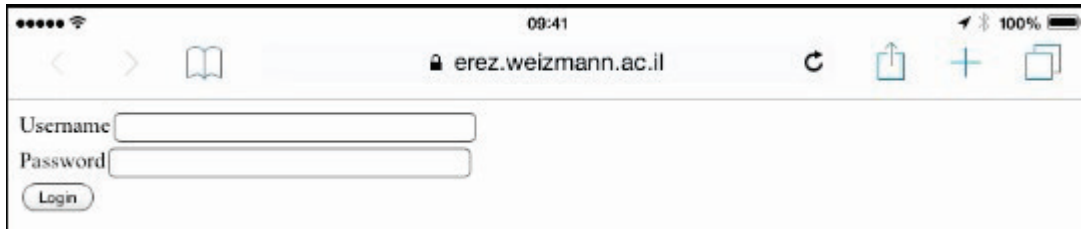


2. Tap the login link.

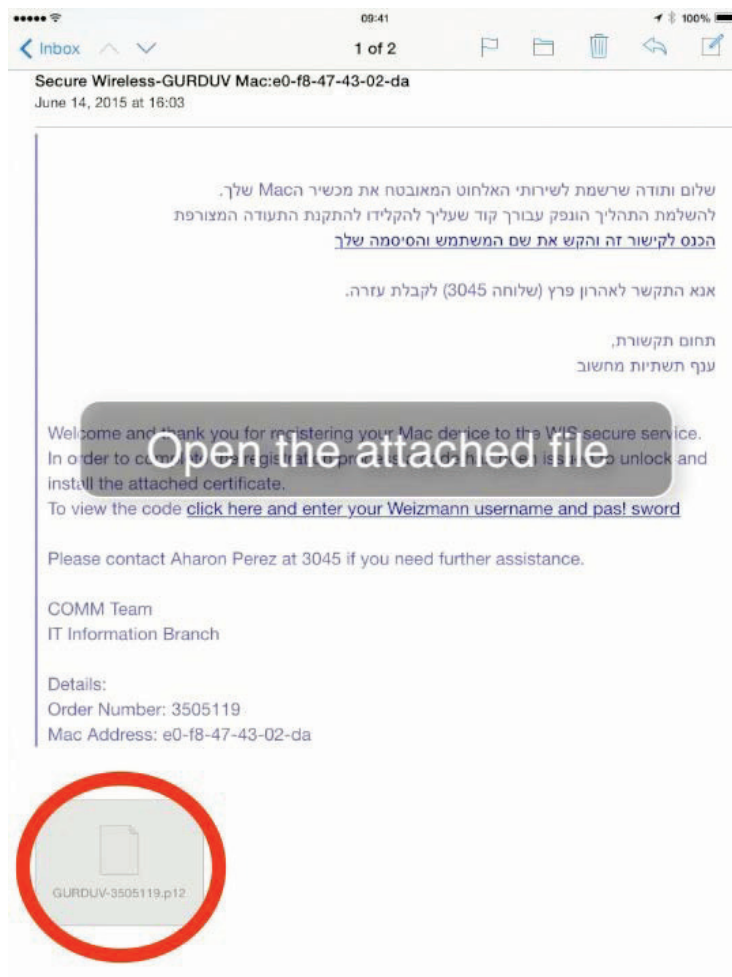




3. Enter your Weizmann Institute login credentials on the Web page that loads in your browser, and tap **Login**.

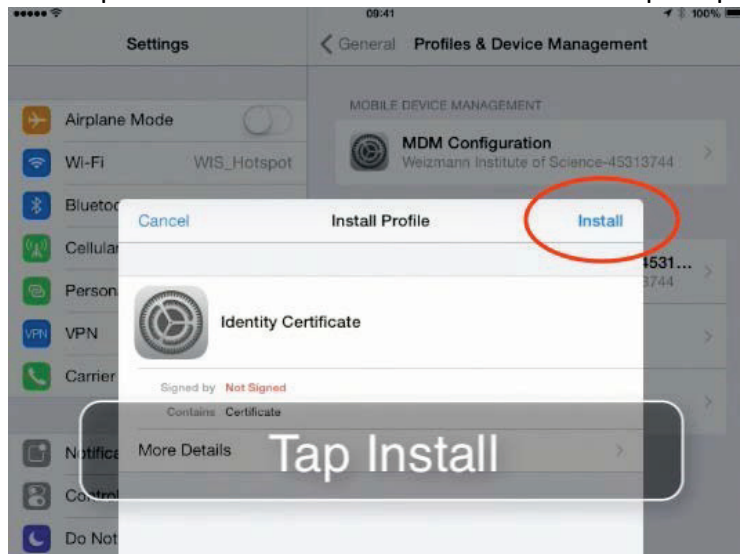


4. Go back to the registration confirmation e-mail message received, and open the file attached to this message.

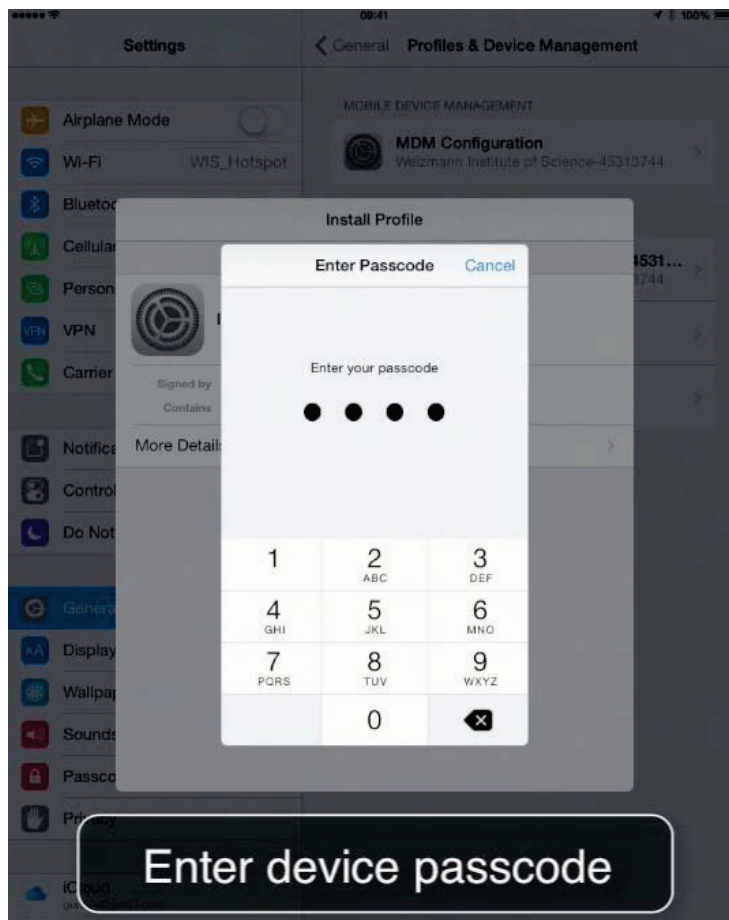




5. Tap **Install** when presented with the certificate installation prompt.

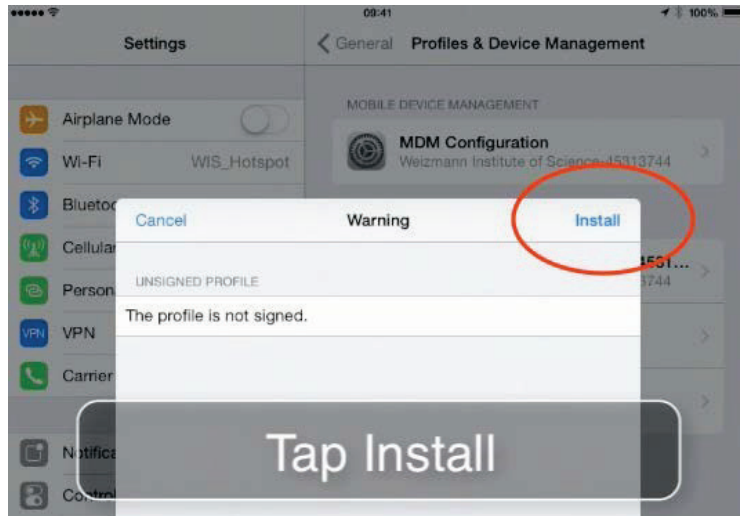


6. Enter your device passcode when prompted to do so.

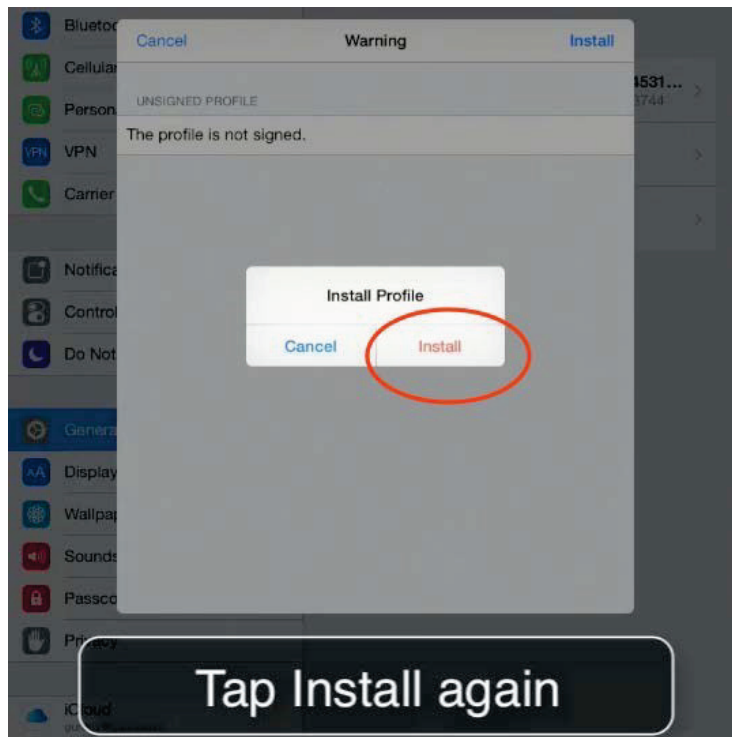




7. Tap **Install** again when presented with the unsigned profile warning.

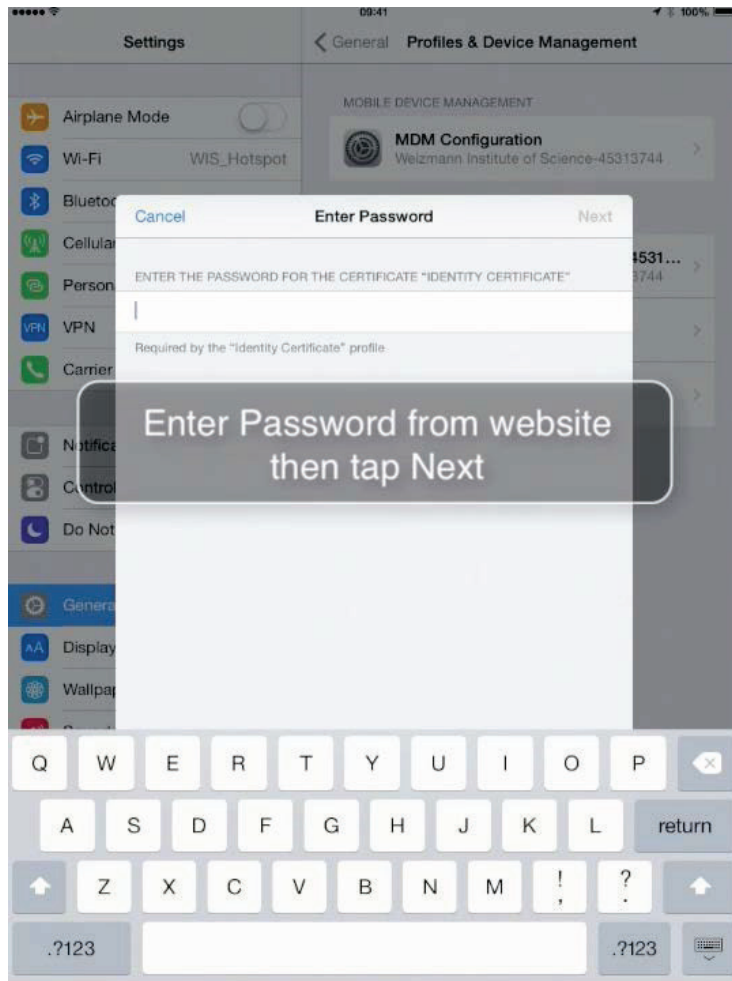


8. Tap **Install** once more when prompted to install the profile.

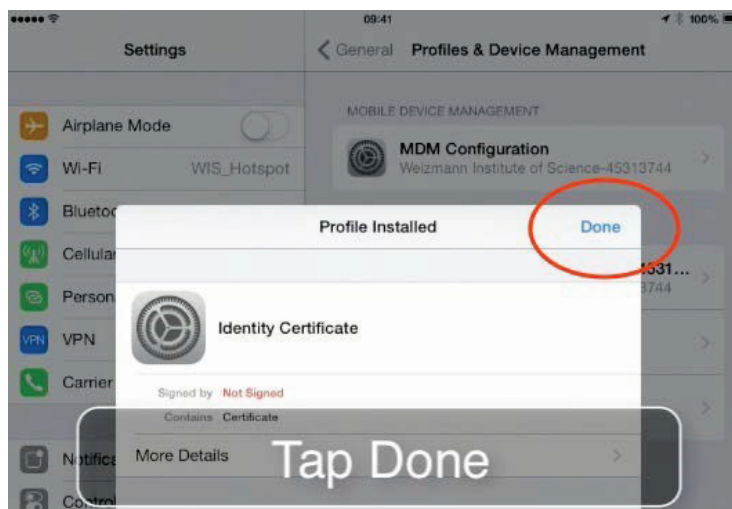




9. Enter the password (from the Web site) and tap **Next**.

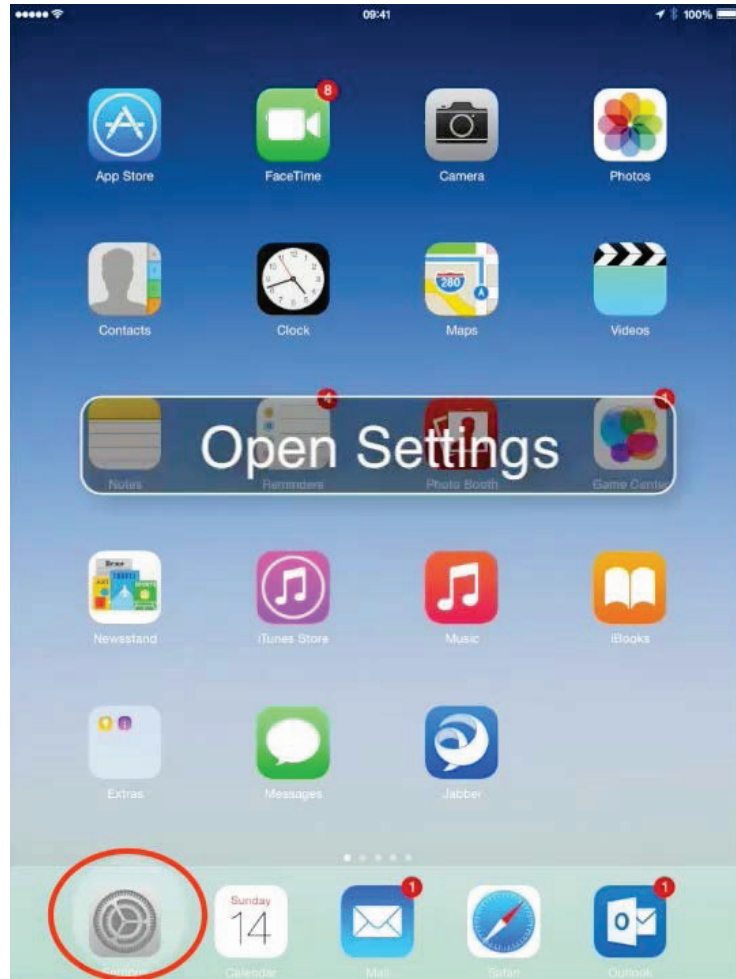


10. Tap **Done**.

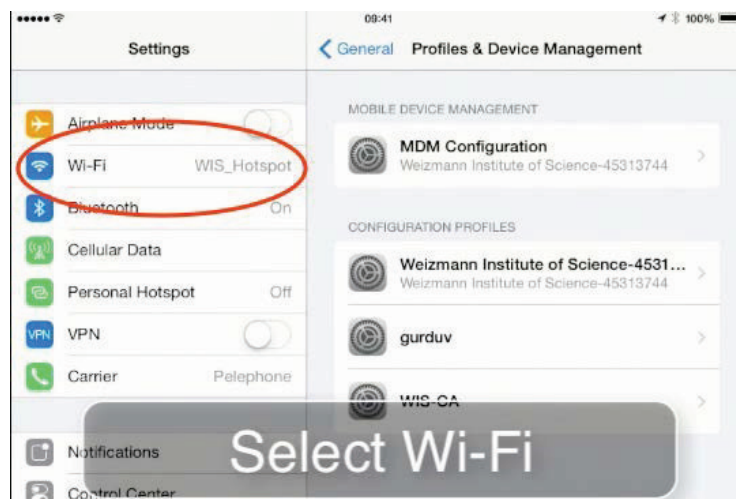




11. Press the home button on your iPhone or iPad to return to the home screen, then tap **Settings**.

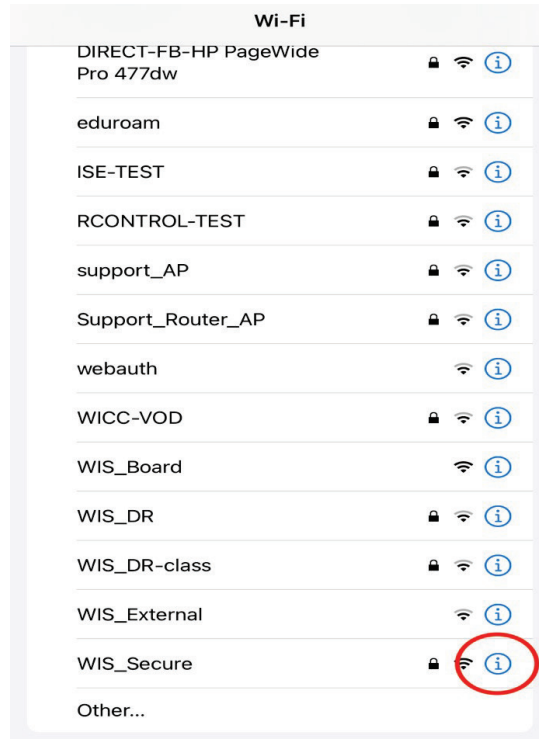


12. Tap the **Wi-Fi** settings section.

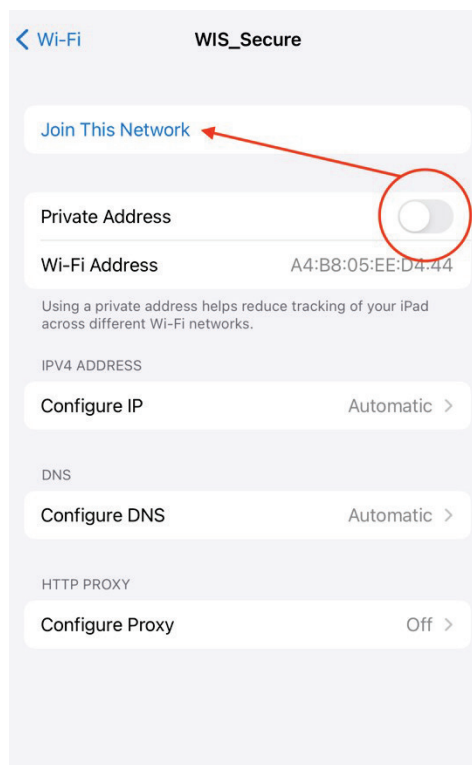




13. Tap the **i** next to **WIS\_Secure** network.



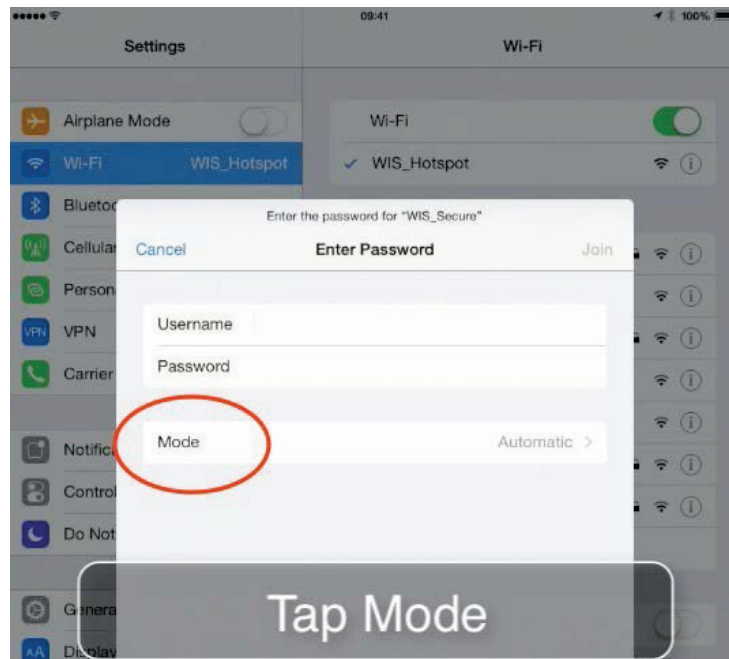
14. Disable **Private Address** and tap **Join This Network**.





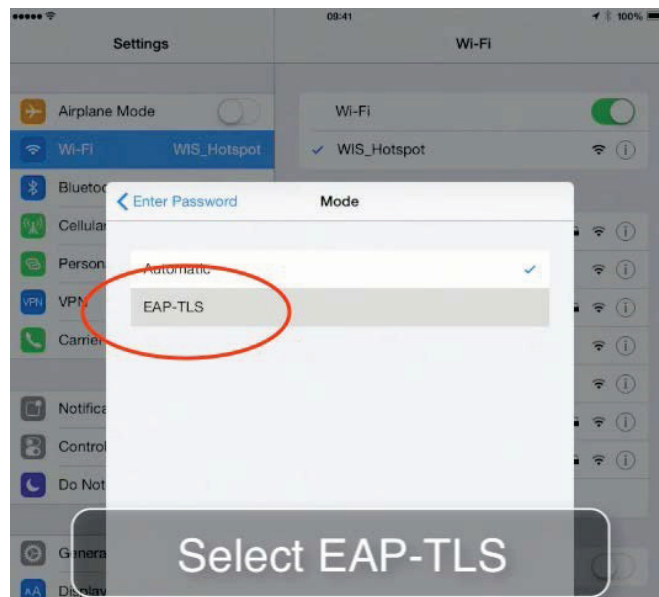


15. Tap **Mode** when prompted to enter login credentials for the network.

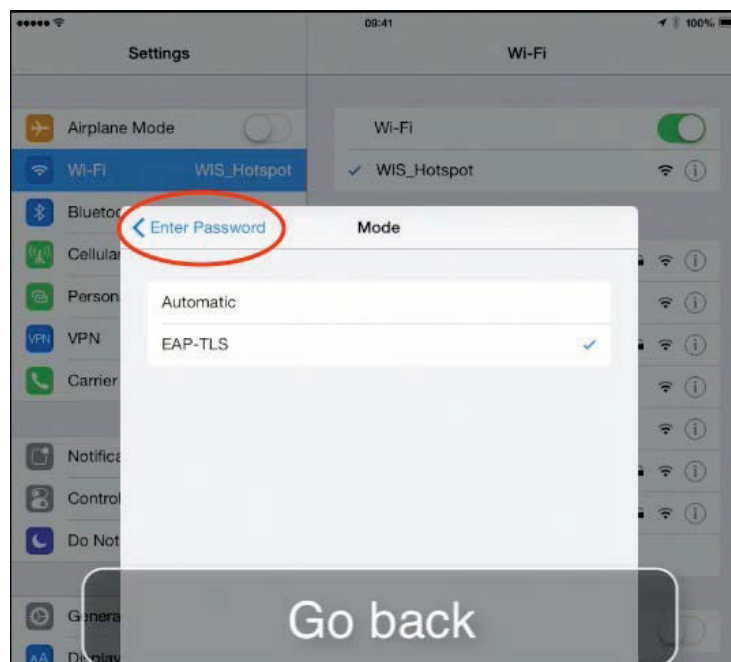




16. Tap **EAP-TLS**.

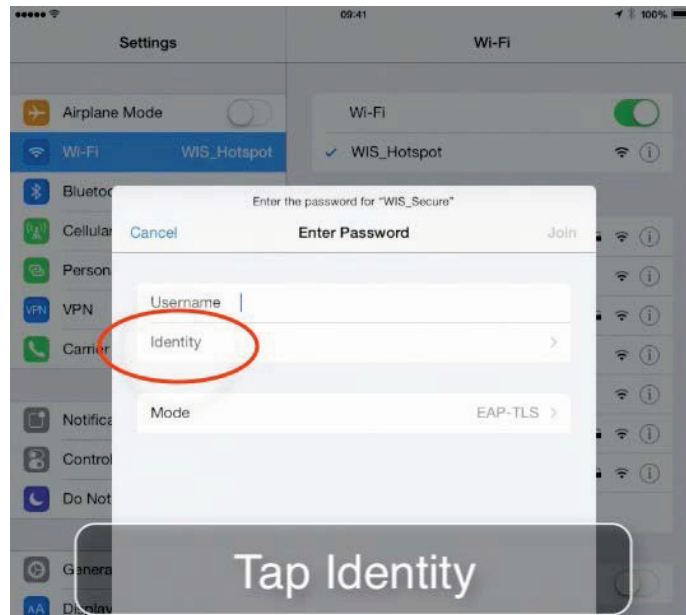


17. Tap **< Enter Password** to go back to network login credential entry.

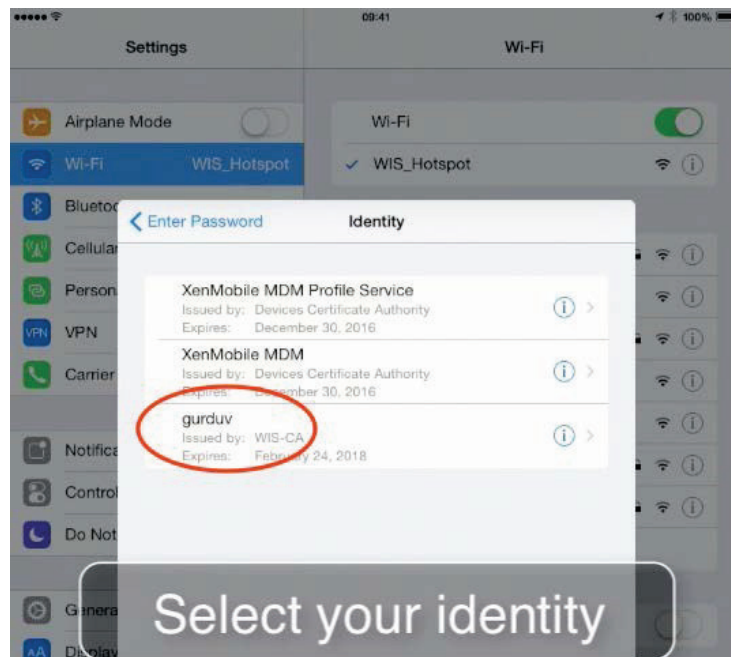




18. Tap Identity.

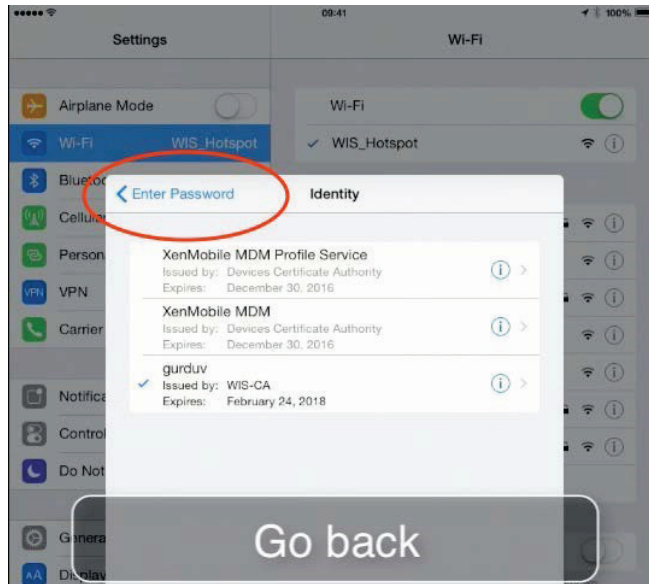


19. Tap to select your identity.

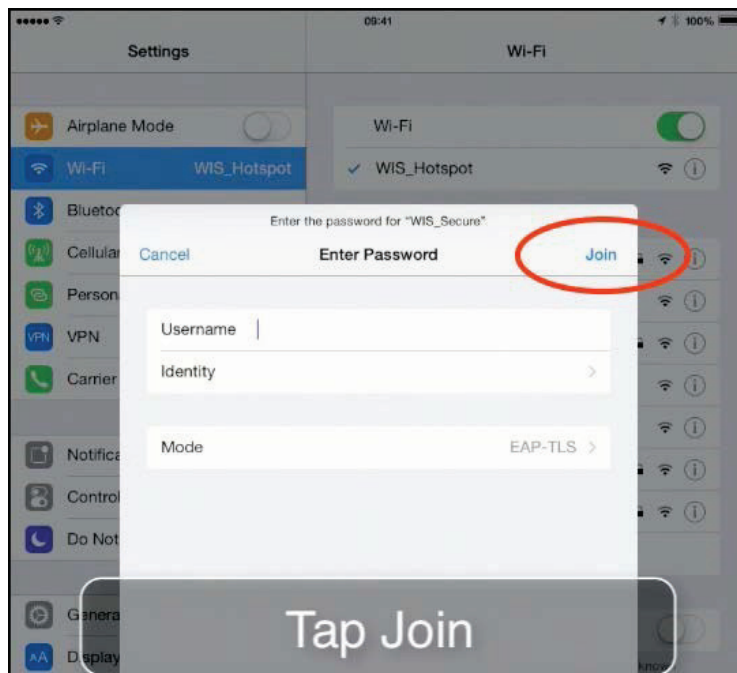




20. Tap < Enter Password to go back to network login credential entry.

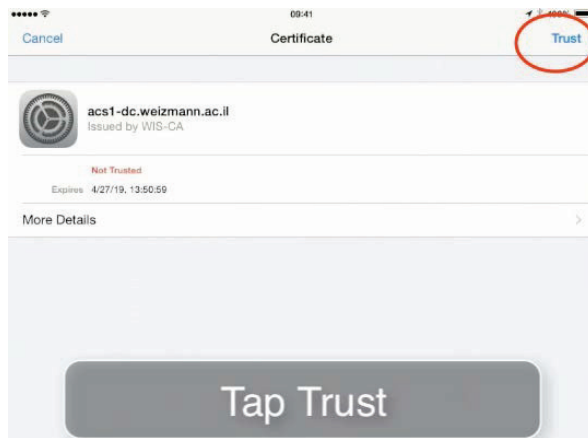


21. Tap Join.

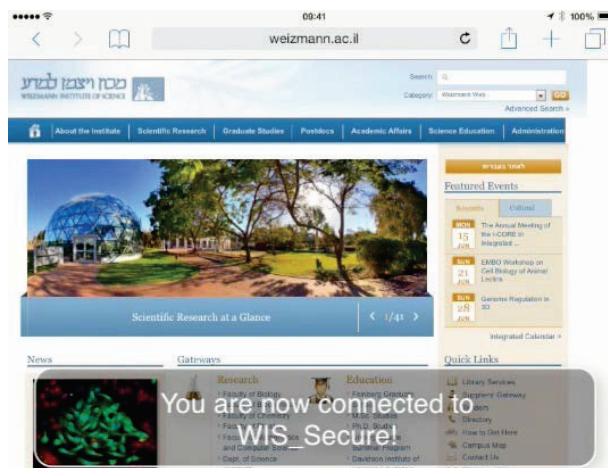




22. Tap Trust.



23. You are now connected to the WIS\_Secure network.



24. You may tap the information icon right next to the WIS\_Secure network under the **Wi-Fi** settings section to check the IP address assigned to your iPhone or iPad.

